

## INFLATION (CPIX) PLUS 6-7 PIGS COMPLIANT TARGETED RETURN STRATEGY

Monthly Fund Report – For portfolio over rolling 60-month period  
As at 30 September 2008

### INVESTMENT MANAGER

Absa Investment Management Services (AIMS)

### LAUNCH DATE

1 December 2003

### TOTAL EXPENSE RATIO

1.27% - 3.32%

### STRATEGY BENCHMARK

Inflation (CPIX) plus 6%-7%

### STRATEGY OBJECTIVE

The objective of this strategy is to target an annual return of CPIX plus 6%-7% over a rolling 60-month period and not to lose capital over a rolling 36-month period, while at all times remaining within Prudential guidelines.

### AIMS MULTI MANAGEMENT INVESTMENT METHODOLOGY

- The purposeful application of a sound investment philosophy
- Selection of the most appropriate underlying investment managers
- Strategic asset allocation based on the investment houseview
- Blending of the various investment styles in accordance with market circumstances
- Monthly portfolio and investment manager performance analysis

### FUND COMMENT

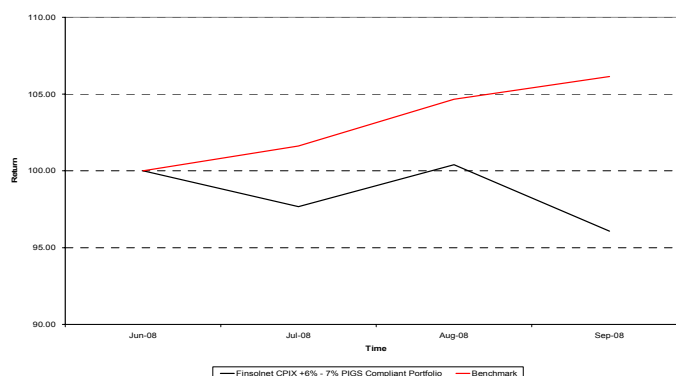
The portfolio underperformed its benchmark during the 3-month period, returning -3.93% against the benchmark return of 6.14%. The portfolio underperforms its benchmark since inception.

Over the 3-month period to the end of September 2008, the FTSE/JSE All Share Index returned -20.56%, the All Bond Index returned 12.57%, cash returned 2.92% and the South African Property Index returned 23.08%. During the same period, international equities returned -10.79% and international fixed interest returned 2.64%. Local property was the best performing asset class followed by local bonds. The Rand depreciated by 5.28% against the US dollar over the period having a negative impact on the international assets within the portfolio.

### PERFORMANCE

Portfolio	Inception (26/06/2008)	3 Month	1 Year AGR	2 Year AGR	3 Year AGR	5 Year AGR
Allan Gray Balanced A		-2.60%	-2.16%	9.26%	14.41%	21.67%
Coronation Balanced Plus A		-2.29%	-4.50%	10.42%	14.98%	23.56%
RMB Balanced A		-8.70%	-8.82%	6.09%	12.25%	-
Investec Opportunity A		-2.71%	1.60%	11.08%	14.25%	23.12%
ABSA Capital Gains Tax Fund		2.90%	11.06%	10.05%	9.03%	8.48%
<b>Targeted Return Strategy CPIX +6-7 (since inception)</b>	-3.93%	-3.93%	-	-	-	-
Benchmark	6.14%	6.14%	-	-	-	-

### PERFORMANCE GRAPH



### EFFECTIVE ASSET ALLOCATION

Asset Class	%
Equities	59.03%
Bonds	2.74%
Property	1.68%
Cash	20.12%
International Equity	9.68%
International Fixed Interest	6.76%

### UNDERLYING FUNDS

Portfolio	Weighting
Allan Gray Balanced A	24.25%
Coronation Balanced Plus A	24.25%
RMB Balanced A	24.25%
Investec Opportunity A	24.25%
ABSA Capital Gains Tax Fund	3.00%
Volatility	12.73%

Inflation as measured by CPIX ended the month at 13.63% and continues to increase at a rate significantly above the target range set by the SARB.

Unit trusts are medium to long-term investments. The value of units may go down as well as up and past performance is not necessarily a guide to the future. Unit trust prices are calculated on a net asset value basis, which is the total value of all assets in the portfolio including any income accrual and less any permissible deductions from the portfolio. Unit trusts are traded at ruling prices and can engage in borrowing and scrip lending. A schedule of fees and charges and maximum commission is available from the management company / scheme. Different classes of units apply to this fund and are subject to different fees and charges. Commission and incentives may be paid and if so, would be included in the overall costs. It should also be noted that as a result of the nature of wrap fund portfolios, an investor's underlying portfolio holdings and/or portfolio performance may differ slightly from the information reflected above. Therefore, performance figures presented on the fact sheet are approximate figures and may differ from actual performances of client accounts.