

Libor (USD 3-months) PLUS 2% TARGETED RETURN STRATEGY
Monthly Fund Report – For portfolio over rolling 36-month period
As at 31 May 2010

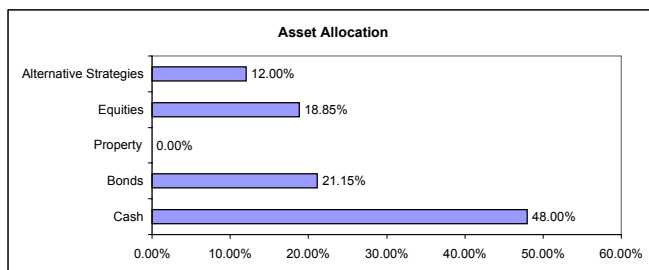
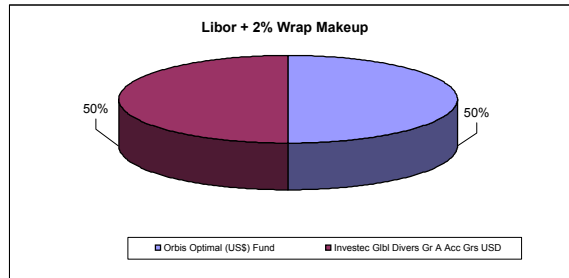
Investment Manager ABSA Investment Management Services
Launch Date 31/05/2005
TER 0.75%

FUND BENCHMARK
 Libor (USD 3-months) plus 2%

FUND OBJECTIVE
 The objective of this strategy is to target an annual return of Libor (USD 3-months) plus 2% over a rolling 36-month period and not to lose capital over a rolling 12-month period in USD terms.

AIMS MULTI MANAGEMENT INVESTMENT METHODOLOGY

- Blend specialist asset managers with unique investment styles and strengths.
- Combine managers to diversify risk, reduce volatility.
- Avoid erratic portfolio performance - provide consistent incremental performance over time.
- Actively managed asset allocation mix
- Management of risk to preserve and create wealth
- Sustained long-term out-performance of benchmark
- Rigorous manager selection to find the best fit
- Thorough research on markets and asset managers



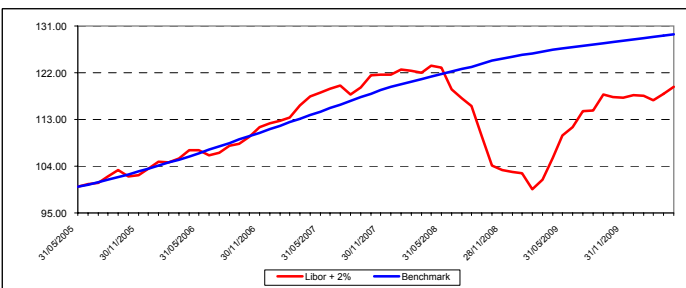
Libor + 2% Strategy (USD)

	Wrap	Bench
2005	3.46%	3.53%
2006	8.51%	7.33%
2007	8.29%	7.36%
2008	-15.37%	4.85%
2009	14.42%	2.66%
2010	-1.08%	0.97%

	Investec Gbl Divers Gr A	Orbis Optimal USD
Investec Gbl Divers Gr A	1	
Orbis Optimal USD	0.37	1

Strategy Statistics

Volatility	12.28%
Worst Month	-8.03%
Best Month	7.73%
Average Annual Performance	7.16%
% Positive Months	61.76%
% Positive Rolling Years	83.27%



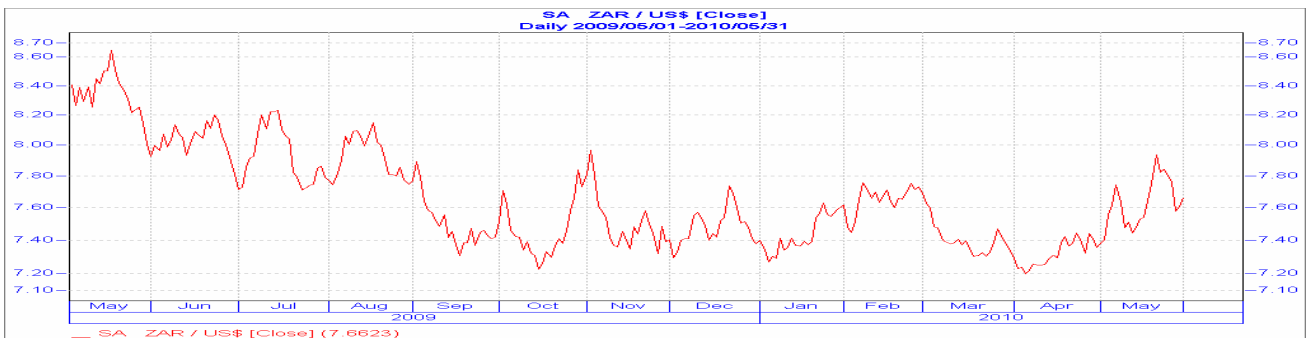
FUND COMMENT:
 May saw the strategy underperform its benchmark, returning -2.40% against the benchmark's 0.21%. The strategy has underperformed its benchmark since inception with a total return of 16.46% against the benchmark's 29.66%.

In terms of individual fund performance against the benchmark, both the underlying funds managed to underperform the benchmark during May. The Orbis Optimal Fund was the better performing fund, returning -1.47%.

The overall risk of the portfolio is low relative to that of the MSCI World Equity Index and the correlations of the underlying funds are very low, adding to the diversification within the strategy.

Performance Report

	Libor + 2%	Benchmark	Investec Gbl Divers Gr A	Orbis Optimal USD
1 Month	-2.40%	0.21%	-3.33%	-1.47%
3 Months	-0.25%	0.59%	-1.16%	-1.69%
6 Months	-0.65%	1.16%	1.62%	-2.94%
12 Months	5.91%	2.35%	13.24%	-1.11%
36 Months	-1.46%	13.23%	-8.93%	5.74%
60 Months	16.46%	29.66%	20.94%	24.74%



Unit trusts are medium to long-term investments. The value of units may go down as well as up and past performance is not necessarily a guide to the future. Unit trust prices are calculated on a net asset value basis, which is the total value of all assets in the portfolio including any income accrual and less any permissible deductions from the portfolio. Unit trusts are traded at ruling prices and can engage in borrowing and scrip lending. A schedule of fees and charges and maximum commission is available from the management company / scheme. Different classes of units apply to this fund and are subject to different fees and charges. Commission and incentives may be paid and if so, would be included in the overall costs. It should also be noted that as a result of the nature of wrap fund portfolios, an investor's underlying portfolio holdings and/or portfolio performance may differ slightly from the information reflected above. Therefore, performance figures presented on the fact sheet are approximate figures and may differ from actual performances of client accounts.